

## FRAME 1.0

Samtgrau, Graphitschwarz

GRIFFWERK Türdrückergarnitur geeignet für den Einsatz im Privatbereich

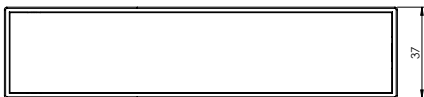
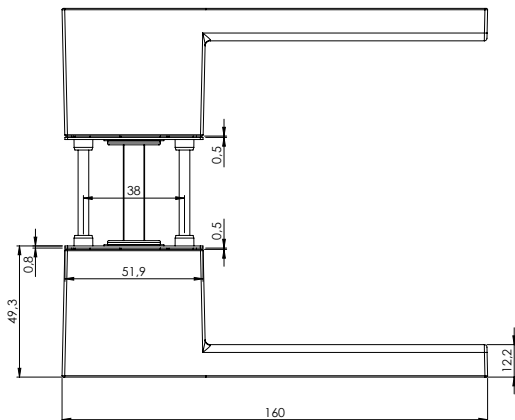
- Design: Prof. Thomas Gerlach
- Drücker festdrehbar gelagert mit integriertem Hochhalte Mechanismus
- Verschraubung mit M4-Schrauben
- Madenschraube unsichtbar von unten eingeschraubt und mit Schraubensicherung gesichert
- 8 mm Vierkantstift
- Drückergarnitur im eingebauten Zustand ohne sichtbare Schrauben/ Montage- oder Demontageöffnungen im Sichtbereich
- Verschiedene Inlays erhältlich

### Variante UV

- Standardtürstärke: 38-45 mm, erweiterbar über Zubehörsätze bis 75mm
- Angepasste Schlüsselrosetten optional erhältlich

### Variante WC

- Verriegelung in den Griff integriert
- kein spezielles Schloss benötigt
- Erhältliche Türstärkenbereiche: 38-45mm / 48-54mm / 55-61mm



## FRAME 1.0

velvet grey, graphite black

GRIFFWERK door lever handle suitable for private use

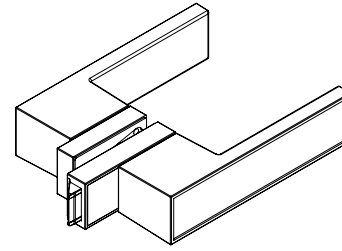
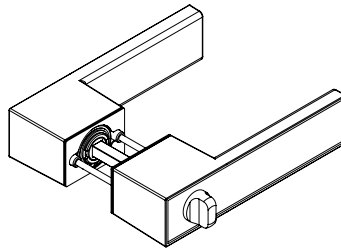
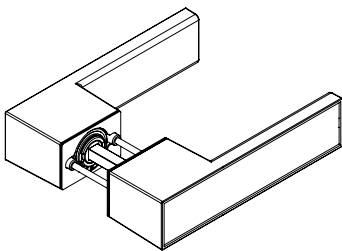
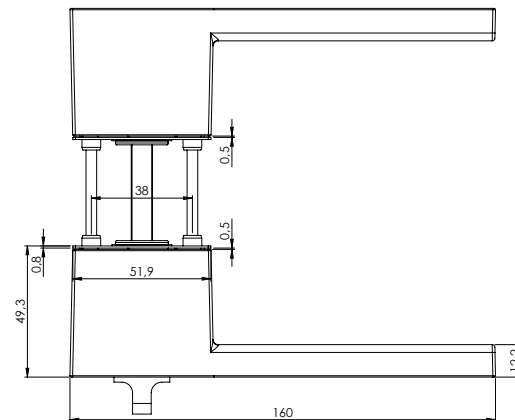
- Design: Prof. Thomas Gerlach
- Lever handle swivel-mounted with integrated retaining mechanism
- Attached with M4 screws
- Concealed grub screw inserted from below and secured with thread lock
- 8 mm square spindle
- Built-in lever handle with no visible screws/fixing or removal holes in the visible surface
- Different inlays available

### Variant UV

- Standard door thickness: 38-45 mm, expandable via accessory sets up to 75mm
- Customized key rosettes available as an option

### Variant WC

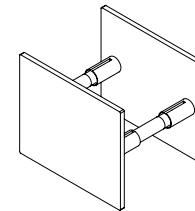
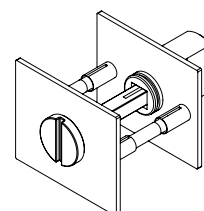
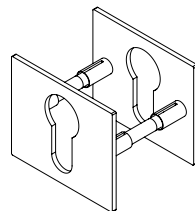
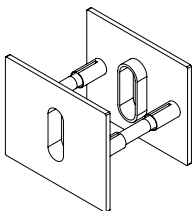
- Lock integrated in the handle
- no special mortise lock required
- Available door thickness ranges: 38-45mm / 48-54mm / 55-61mm



FRAME 1.0 UV  
Frame 1.0 UV

FRAME 1.0 WC  
Frame 1.0 WC

Glasschloss FRAME mit Griffpaar FRAME 1.0 UV  
Glass door lock FRAME wir handle pair FRAME 1.0 UV



FRAME Rosette BB  
Frame Rose BB

FRAME Rosette PZ  
Frame Rose PZ

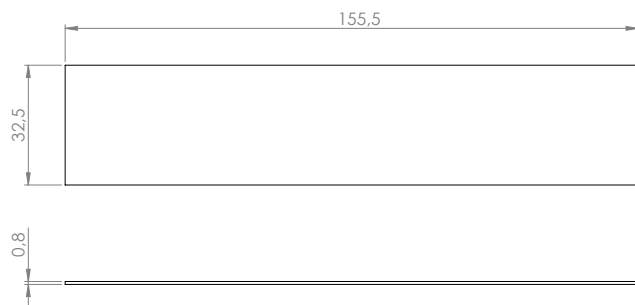
FRAME Rosette WC  
Frame Rose WC

FRAME Rosette BL  
Frame Rose BL

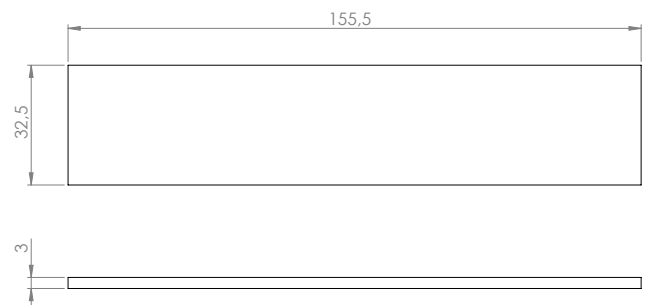
# FRAME 1.0 INLAYS

FRAME 1.0 INLAYS

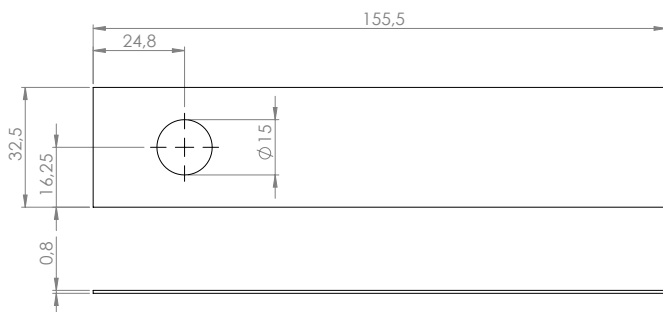
Material <i>Material</i>	Ausführung <i>Execution</i>	Beschreibung <i>Description</i>
Glas <i>Glass</i>	RAL9005 <i>RAL9005</i>	Schwarz <i>Black</i>
Glas <i>Glass</i>	RAL9016 <i>RAL9016</i>	Weiß <i>White</i>
Metall <i>Metal</i>		Graphitschwarz <i>Graphite black</i>
Metall <i>Metal</i>		Samtgrau <i>Velvet grey</i>
Resopal <i>Formica</i>	RAL9016 <i>RAL9016</i>	Kristallweiß seidenmatt <i>Crystal white satin finish</i>
Resopal <i>Formica</i>	RAL8002/9004/9011/9017 <i>RAL8002/9004/9011/9017</i>	Schwarz hochglanz - glatt <i>Black high gloss - smooth</i>
Resopal <i>Formica</i>	RAL9003/9016 <i>RAL9003/9016</i>	Weiß hochglanz - glatt <i>White high gloss - smooth</i>
Resopal <i>Formica</i>	RAL9010 <i>RAL9010</i>	Weiß seidenmatt - glatt <i>White satin finish - smooth</i>
Sonderdekor <i>Special decor</i>	RAL/Resopal <i>RAL/formica</i>	(mind. Abnahme 5 Paar) <i>(Minimum order 5 pairs)</i>
Sonderdekor <i>Special decor</i>		Auf Anfrage <i>On demand</i>



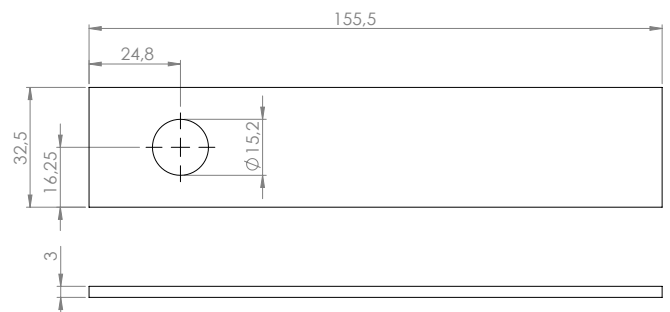
Resopal UV    Metall UV  
*Formica UV    Metal UV*



Glas UV  
*Glass UV*



Resopal WC    Metall WC  
*Formica WC    Metal WC*



Glas WC  
*Glass WC*